



CSU Bakersfield

School of Natural Sciences,  
Mathematics, and Engineering

# Self-Automated Dog House - EMP

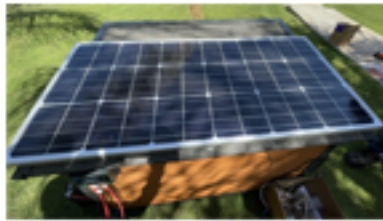
Enrique Hernandez - Fernando Murillo - Juan Palma - Carlos Ramos

Give your dog a home...



A Smart Home

## Renewable Energy



Unit is powered by clean energy for all componetns to ensure postitive impact on environment

## Cooling System



Temperature controlled unit to set desired value on panel with lcd screen

## Water Dispensor



Water system fills bowl of when water levels are low by reading real time values

## Food Dispensor



Automatic Food dispensor to place food in a bowl every hour desired

## Abstract

Our goal was to design a smart dog home for animals to get the adequete care and treatment when owners are away. To accomplish this we implemented all features necessary for a dog to be well taken care of when the owner is away from home.

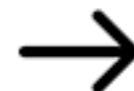
## Conclusion

The Dog house project has given us a lot of experience dealing with maintainence, implementation and the essential need for team work to complete a project of this scope. The interconnection of mutiple components was possible with the vast knowledge of each member.

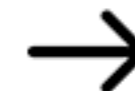
Inputs / Set Values



Arduino units / codes



Water System  
Food System  
Cooling system



Dog House